

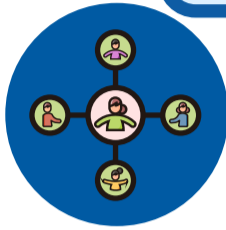
Building A Caregiver Support Network

Through the Singapore Together Alliance for Action (AfA) for Caregivers of Persons with Disabilities

Launch of AfA in 2021

Project 3i: CAREconnect

Built capabilities of community to support caregivers of persons with disabilities



Systematically connected caregivers to support groups and community partners

- >1000 unreached caregivers linked with peer support

Developed a 12-month training model to equip grassroots leaders to build inclusive communities

- >70 grassroots leaders trained over 6 constituencies, supporting >1400 caregivers
- Caregivers were able to participate more in social, family and community life

Project 3i: CAREbuddy

Established a community network of trained caregivers to provide peer support

- >50 experienced caregivers trained
- >90 caregivers matched and supported
- Caregivers showed improvement in well-being and caregiving competencies

What is it?

- A coalition of partners convened by SG Enable and National Council of Social Service
- Bringing together ground expertise and resources to support pilot projects such as Project 3i and Community Circles
- Project 3i is a self-sustaining caregiver support model

Impact Highlights

>3100 caregivers supported >130 volunteers trained

14 strategic partners involved in co-creating the caregiver support model

Project 3i: CAREwell

Provided integrated health and social support for families with complex needs

- 48 families benefitted from multidisciplinary, professional support

Community Circles Model

Connected caregivers with volunteers who rally around and journey with them

- 8 circles of support created
- Caregivers received practical assistance and safe space to share their needs and aspirations

2024 & Beyond

Expand Project 3i

Partnering CaringSG to increase programme awareness and participation of caregivers through Enabling Services Hubs

- Scale up to 5 new constituencies over the next 2 years
- Train 100 community volunteers in the new constituencies
- Build up a nationwide pool of 500 trained caregivers

Support Ground-Up Initiatives

- The Caregiver Empowerment Fund by SG Enable supports initiatives that empower caregivers
- Expand number of Community Circles



Interested to start a ground-up project or contribute as a volunteer?
Scan here:



Wish to join a caregiver support network?
Scan here:



Developed by:

SG ENABLE
Inclusive society. Enabled lives.

